

ONYX

TECHNOLOGY POWERING A CLEANER FUTURE



DX15
BATTERY AUTOSCRUBBER

ILLUSTRATED PARTS LIST

TABLE OF CONTENTS

Wheel Group	3
Fresh Water System Group	4-5
Recovery Tank Cover	6
Fresh Water Tank Group	7
Recovery Tank Group	8-9
Frame Group	10-11
Brush Group 1	12-13
Brush Group 2	14-15
Squeegee Group	16-17
Notes	18-19

How to order spare parts:

Parts and supplies may be ordered by phone, by fax or by email.

- A. Identify the machine model
- B. Identify the machine serial number
- C. Provide the part number and quantity

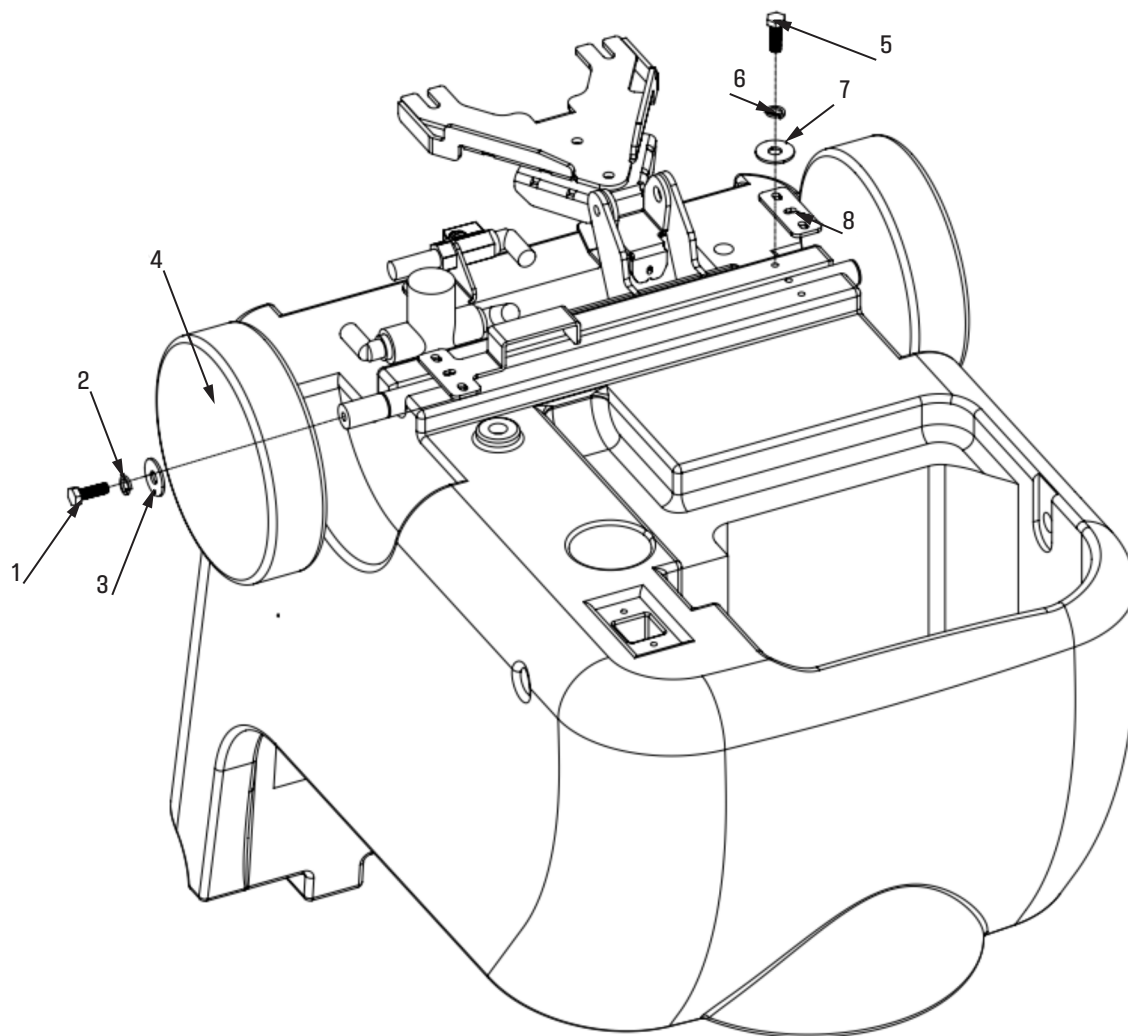
Provide your detail logistic information

Provide your name, company name, shipping address, phone number and purchase order number.



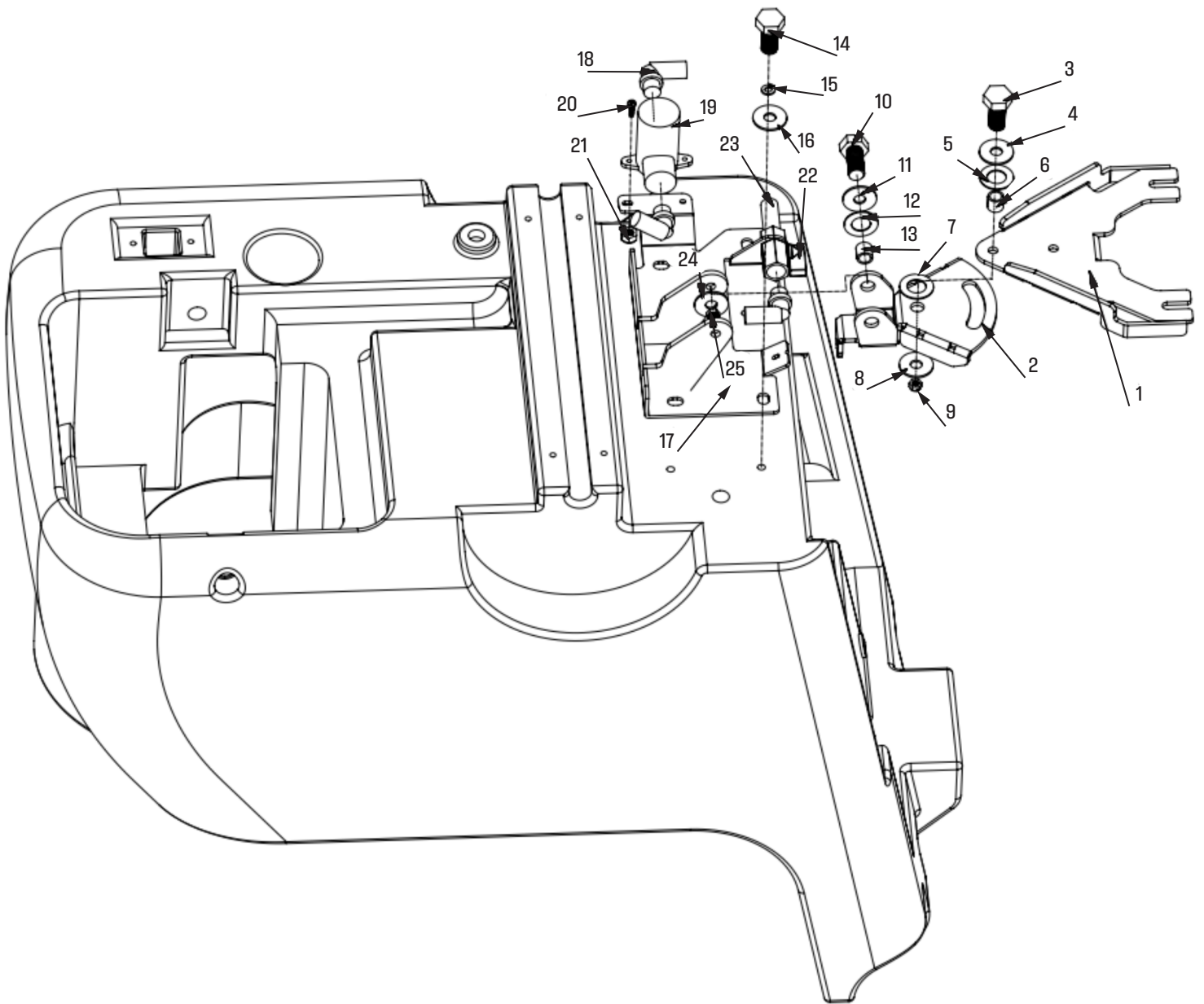
12605 Commerce Station Dr • Suite 700
Huntersville, NC 28078
704.827.9368

WHEEL GROUP



No	Part No.	Description	Qty
1	For Reference	M8×15 Screw	2
2	For Reference	M8 Spring Washer	2
3	For Reference	M8 Washer	2
4	W12338	430Big Wheel	2
5	For Reference	M6×15 Screw	6
6	For Reference	M6 Spring washer	6
7	For Reference	M6 Washer	6
8	W12339	Plate, fixing wheel shaft	2

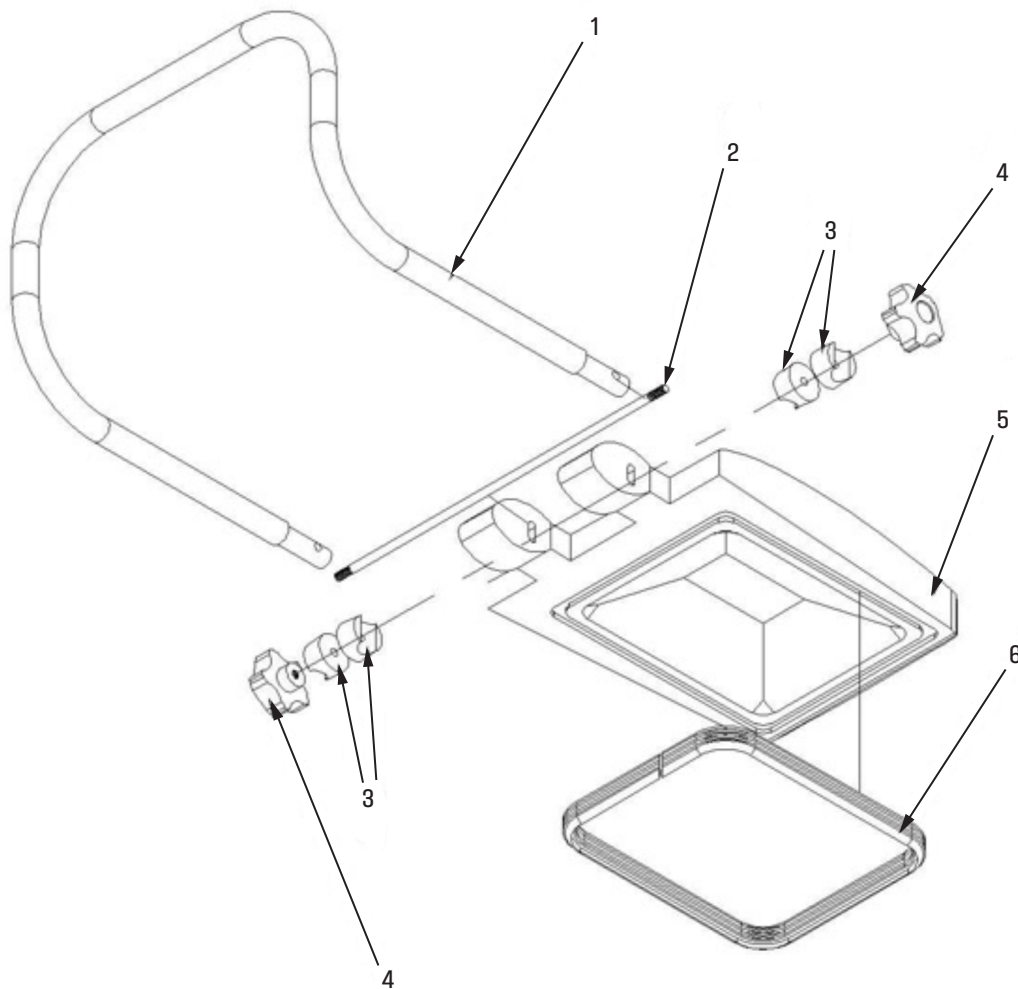
FRESH WATER SYSTEM GROUP



FRESH WATER SYSTEM GROUP

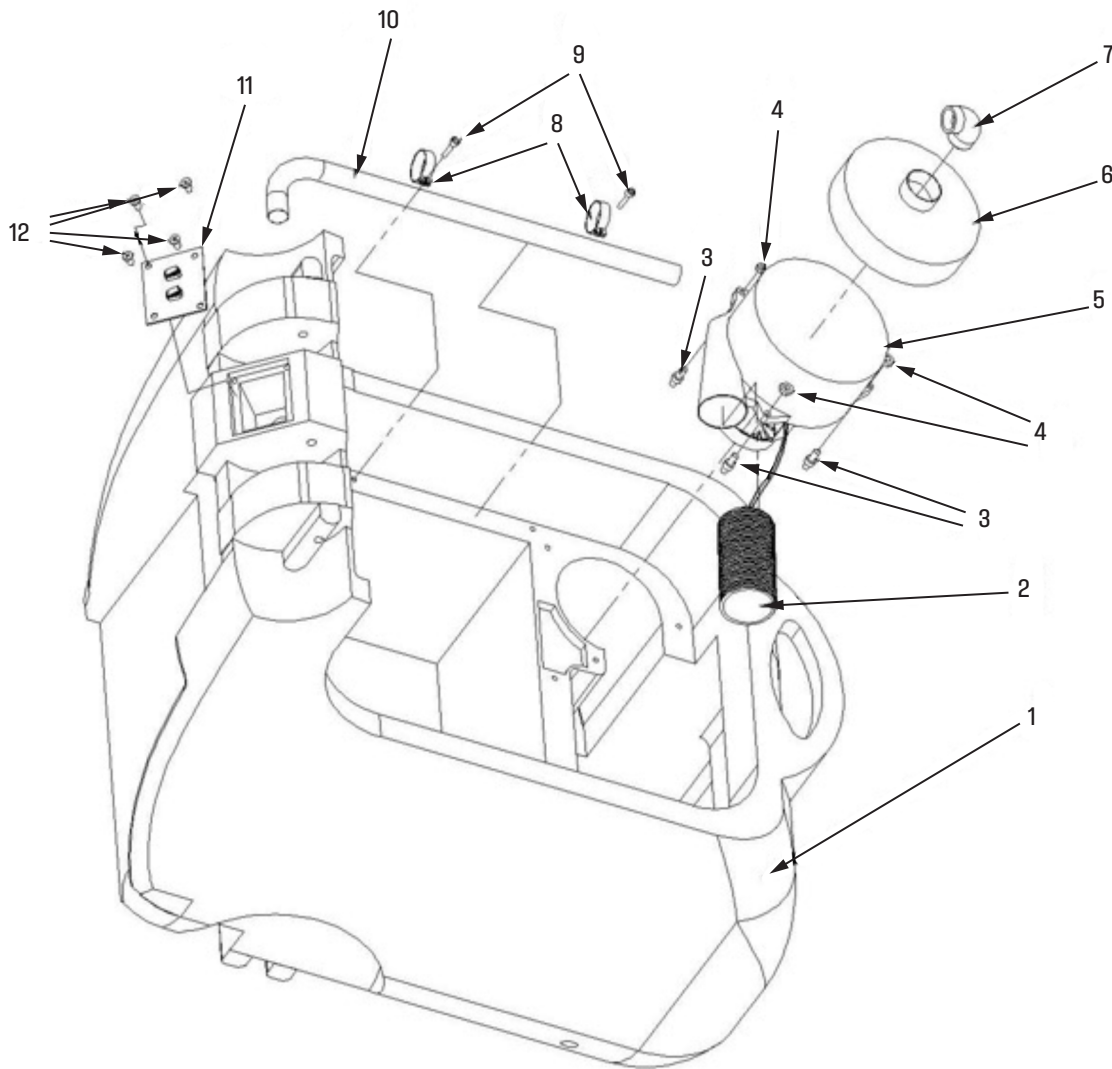
No	Part No.	Description	Qty
1	W12330	Squeegee Frame connecting 1	1
2	W12331	Squeegee Frame connecting 2	1
3	For Reference	8×30 Screw	2
4	For Reference	M8 Nylon Washer	2
5	For Reference	Nylon Washer	2
6	For Reference	M8 ss sleeve	2
7	For Reference	Nylon washer	2
8	For Reference	M8 washer	2
9	For Reference	M8 Non-slip nut	2
10	For Reference	M8x20 Screw	2
11	For Reference	M8 washer	2
12	For Reference	Nylon Washer	2
13	W12332	Brass Sleeve	2
14	For Reference	M8×15 Screw	4
15	For Reference	M8 Spring Washer	4
16	For Reference	M8 Washer	4
17	W12333	Steel Bracket	1
18	W12334	3/8" Elbow Brass joint, NPT	3
19	W12335	Fresh water Filter	1
20	For Reference	M4×20 Screw	2
21	For Reference	M4 Non-slip Nut	2
22	W12336	3/8" Water valve, NPT	1
23	W12337	Elbow joint, 3/8" NPT	1
24	For Reference	M8 Washer	2
25	For Reference	M8 Non-slip Nut	2

RECOVERY TANK COVER



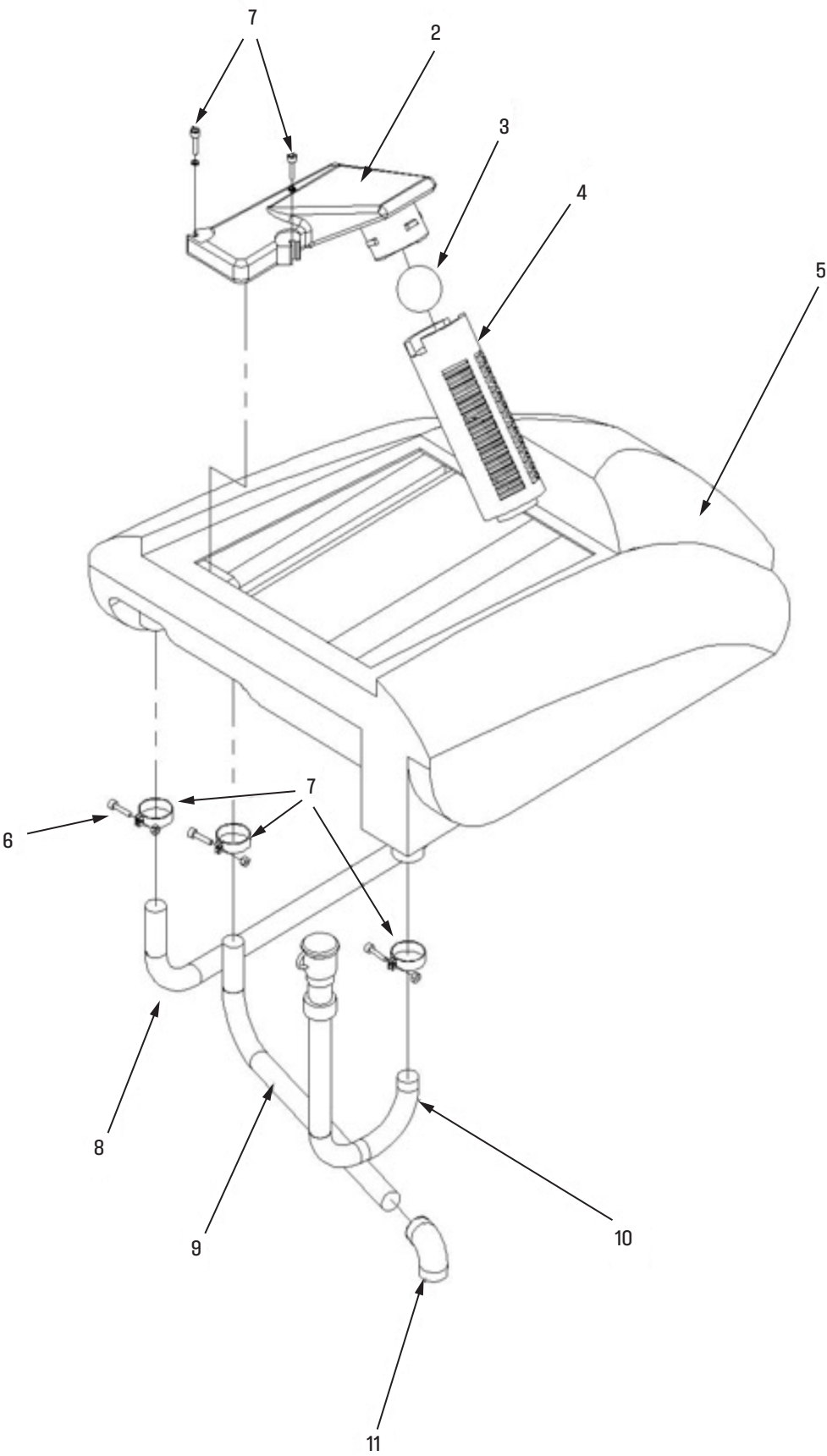
No	Part No.	Description	Qty
1	W12340	Handle	1
2	W12341	Handle fixing Shaft	1
3	W12342	Buckle, handle adjutment	4
4	W12343	Knob	2
5	W12344	Recovery tank cover	1
6	W12345	Seal, Recovery tank cover	1

FRESH WATER TANK GROUP



No	Part No.	Description	Qty
1	W12346	Fresh Water Tank	1
2	W12347	Hush Pipe	1
3	W12348	Damping block, Vacuum Motor	3
4	For Reference	M6 Anti-skid Nut	3
5	W12349	Vacuum Motor	1
6	W12350	Cover, Vacuum Motor	1
7	W12351	Elbow Pipe	1
8	For Reference	Wire Clip	2
9	For Reference	Screw for Wire Clip	2
10	W12352	Wire pipe	1
11	W12353	Panel	1
12	For Reference	Screw	4

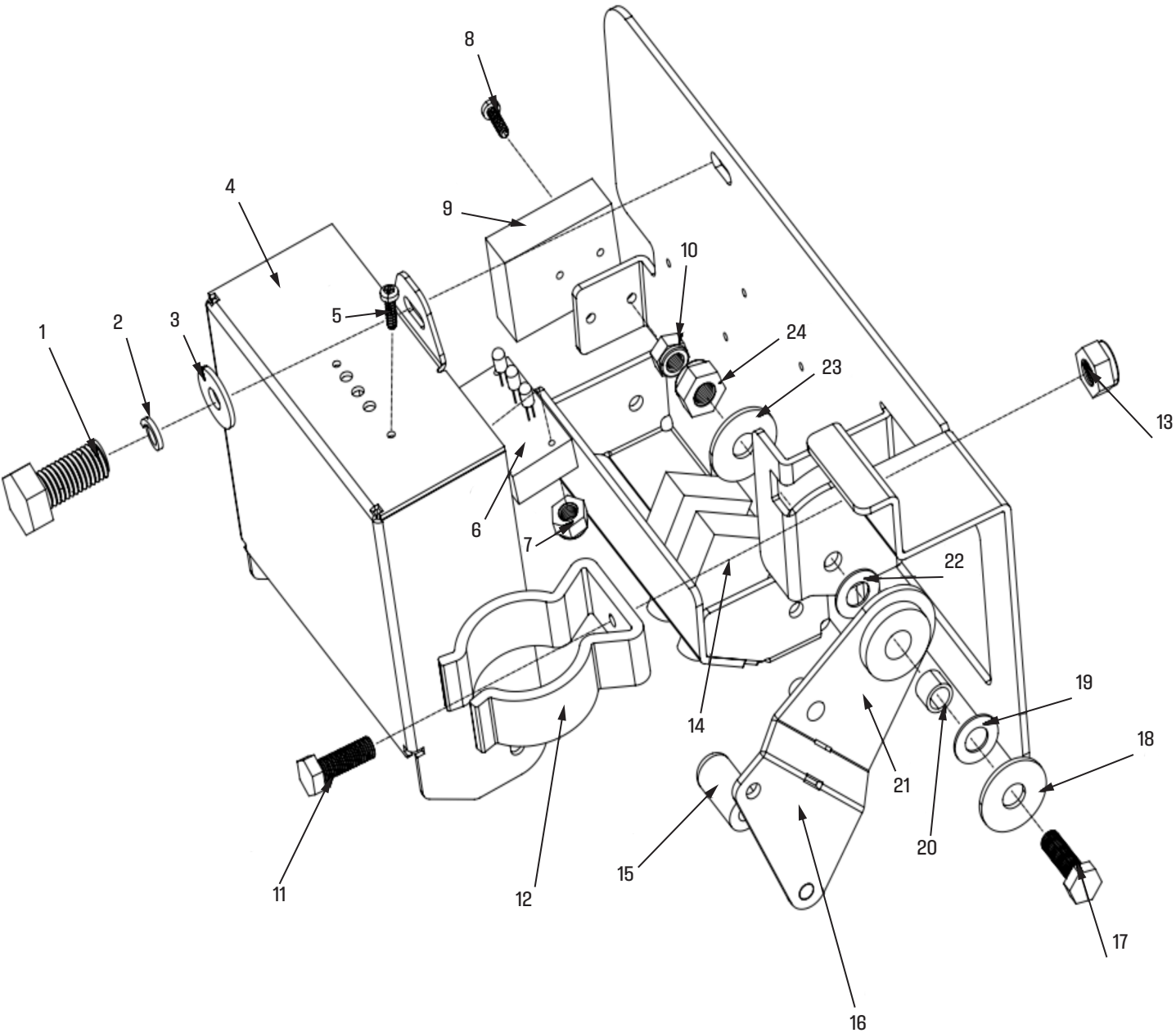
RECOVERY TANK GROUP



RECOVERY TANK GROUP

No	Part No.	Description	Qty
1	W12354	Screw, Bracket of Floating ball	2
2	W12355	Floating Ball Bracket	1
3	W12356	Floating Ball	1
4	W12357	Shell, Floating Ball	1
5	W12358	Recovery Tank	1
6	For Reference	Clip	3
7	For Reference	Clip	3
8	W12359	Air-suction pipe	1
9	W12360	Suction Pipe	1
10	W12361	Drainage Pipet	1

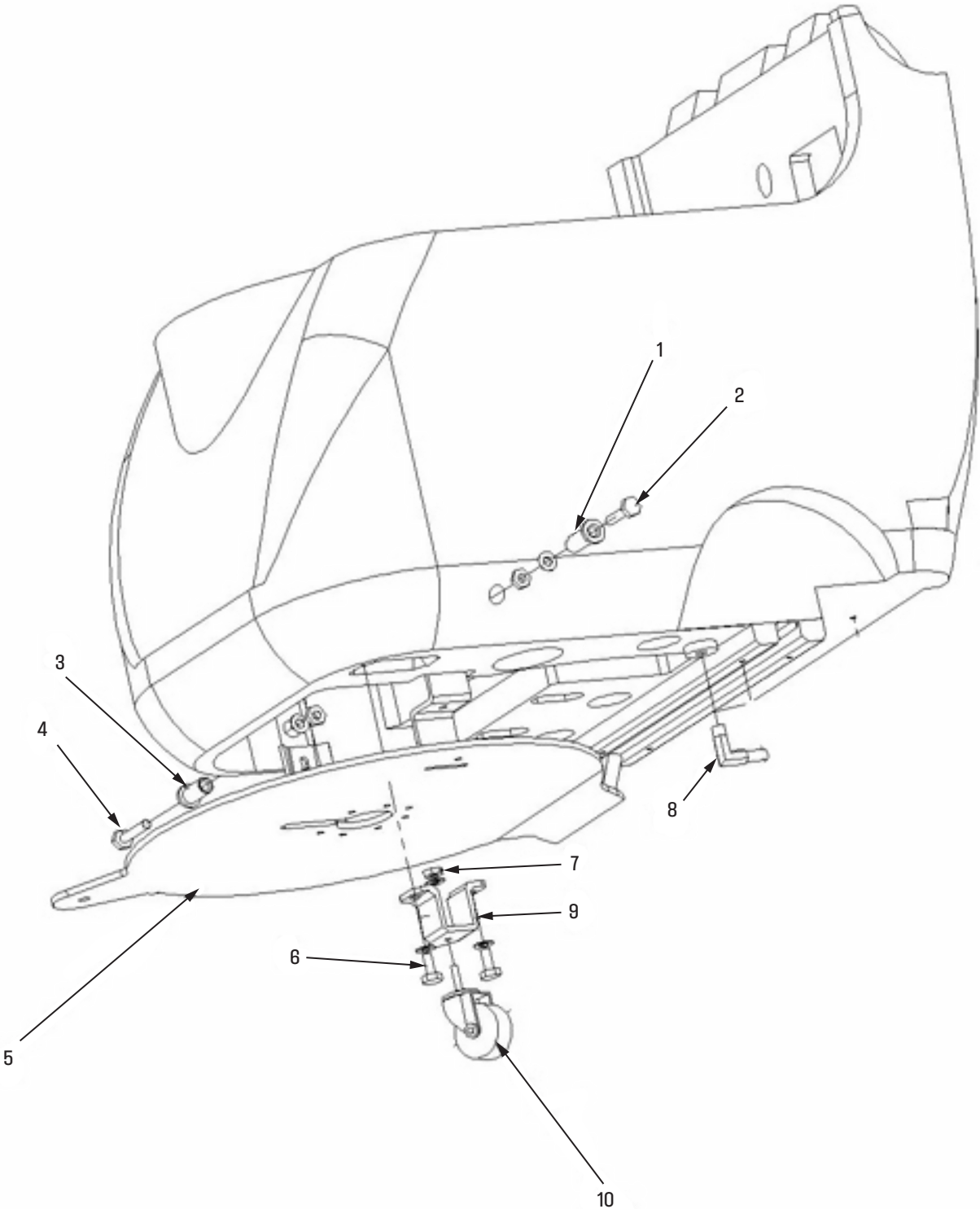
FRAME GROUP



FRAME GROUP

No	Part No.	Description	Qty
1	For Reference	M6×20 Screw	3
2	For Reference	M6 Spring Washer	3
3	For Reference	M6 Washer	3
4	W12362	Wire Box	1
5	For Reference	M2 Screw	2
6	W12363	Power Light	1
7	For Reference	M2 Screw	2
8	For Reference	M3 Screw	2
9	W12364	Charger Socket	1
10	For Reference	M3 Nut	2
11	For Reference	M6×20 Screw	1
12	For Reference	Drainage Pipe Clip	1
13	For Reference	M6 Non-slip Nut	1
14	W12365	Overload protector	3
15	W12366	Handle, Squeegee lifting	1
16	For Reference	Steel Wire	1
17	For Reference	M8×30 Screw	1
18	For Reference	M8 Washer	1
19	For Reference	Nylon Washer	1
20	W12367	Brass Sleeve	1
21	W12368	Bracket, squeegee lifting	1
22	For Reference	Nylon Washer	1
23	For Reference	M8 Washer	1
24	For Reference	M8 Nut	1

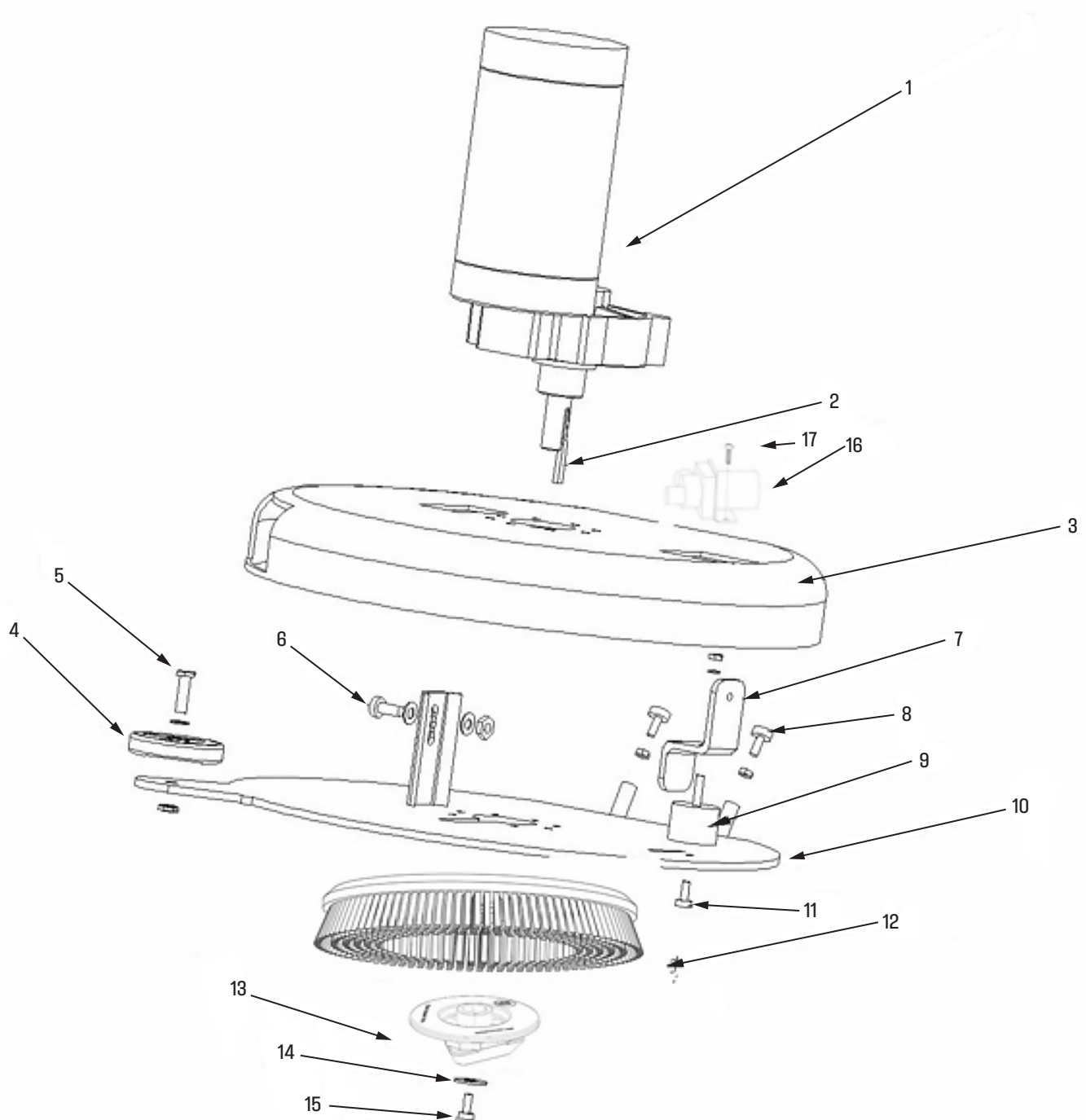
BRUSH GROUP 1



BRUSH GROUP 1

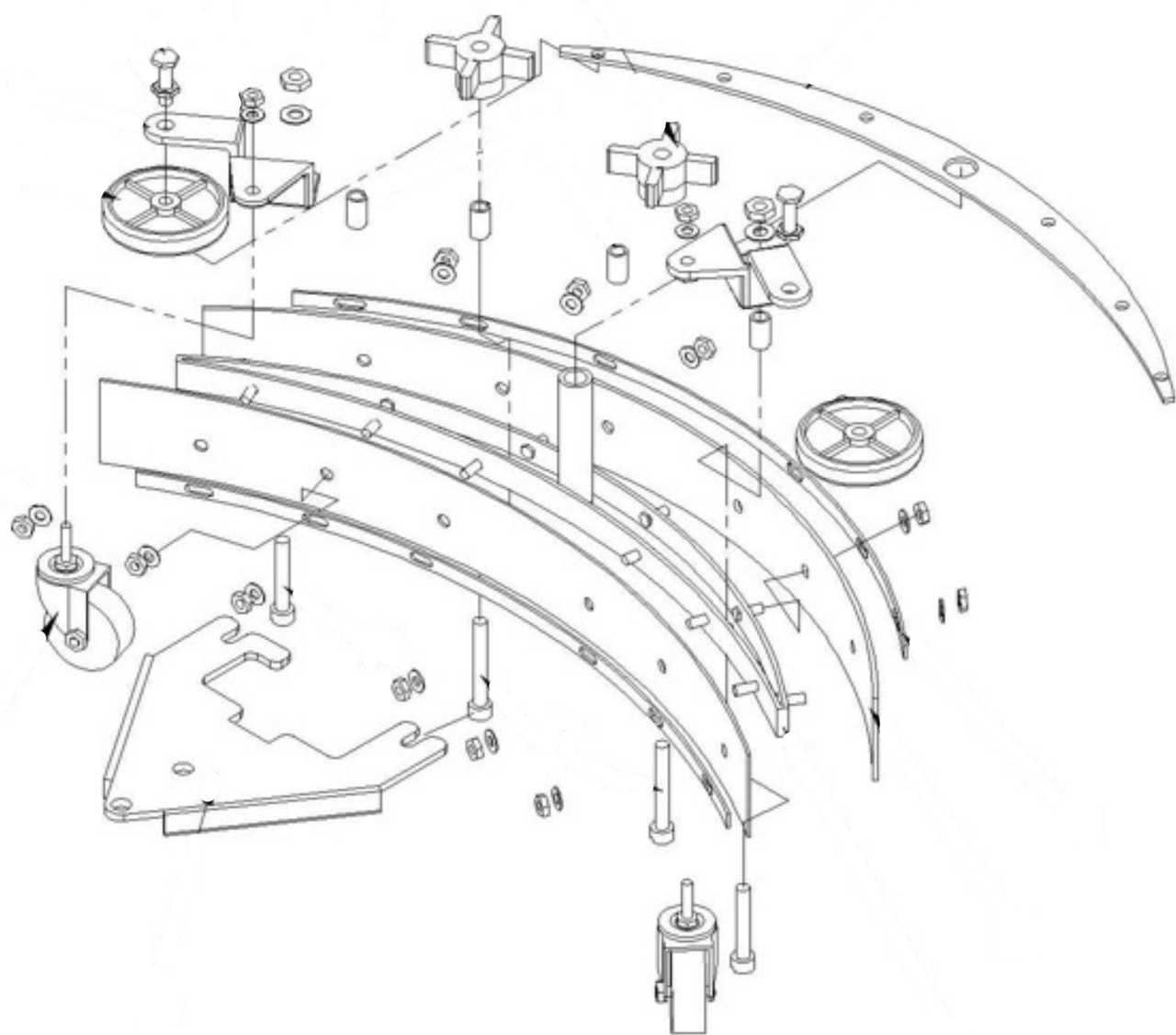
No	Part No.	Description	Qty
1	W12369	Fixing Sleeve, brush assembly (right)	1
2	For Reference	Screw (right)	1
3	W12370	Fixing Sleeve, brush assembly (left)	1
4	For Reference	Screw (left)	1
5	For Reference	Screw, brush motor	1
6	For Reference	Screw, Caster bracket	2
7	For Reference	Screw, Caster	1
8	W12371	Elbow Joint 1/4-14mm, NPT	1
9	W12372	Caster Bracket	1
10	W12373	Caster	1

BRUSH GROUP 2



BRUSH GROUP 2

No	Part No.	Description	Qty
1	W12374	Brush Motor	1
2	For Reference	Pin, Brush motor	1
3	W12375	Brush Cover	1
4	W12376	Bumper Wheel	1
5	For Reference	Screw	1
6	For Reference	Screw, Brush Assembly	1
7	W12377	Lifting Lug, right	1
8	For Reference	Screw	2
9	W12378	Damping block	1
10	W12379	Brush Cover plate	1
11	For Reference	Screw	1
12	W12380	Brush	1
13	W12381	Flange	1
14	For Reference	M8 Washer and Spring Washer	1
15	For Reference	Screw	1
16	W12382	Solenoid Valve	1
17	For Reference	M6 Screw	2



SQUEEGIE GROUP

No	Part No.	Description	Qty
1	W12383	Squeegee plate-1	1
2	W12384	Star Knob	2
3	For Reference	M8 Non-slip Nut	2
4	For Reference	M8 Washer	2
5	For Reference	M10 Non-slip Nut	2
6	For Reference	M10 Washer	2
7	For Reference	M8×40 Screw	2
8	For Reference	M8 Washer	2
9	W12385	Bracket, Bumper Wheel	2
10	W12386	Bumper wheel	2
11	W12387	Brass Sleeve	4
12	For Reference	M6 Washer	6
13	For Reference	M6 Non-slip Nut	6
14	W12388	Caster	2
15	W12389	Squeegee Bracket -1	1
16	For Reference	Screw	2
17	For Reference	Screw	2
18	W12390	Blade Strip	2
19	W12391	Squeegee Blade	2
20	W12392	Squeegee Bracket-2	1

NOTES

This image shows a single sheet of white paper with horizontal ruling lines. The lines are evenly spaced and run across the width of the page. There are no margins, text, or other markings on the paper.

NOTES

[illegible]



12605 Commerce Station Dr • Suite 700
Huntersville, NC 28078
704.827.9368



onyxsolutions.com