

ONYX

TECHNOLOGY POWERING A CLEANER FUTURE



JXi
BATTERY FLOOR BURNISHER

ILLUSTRATED PARTS LIST

TABLE OF CONTENTS

Cover Group	3
Brush Group	4-5
Frame Group	6-7

How to order spare parts:

Parts and supplies may be ordered by phone, by fax or by email.

- A. Identify the machine model
- B. Identify the machine serial number
- C. Provide the part number and quantity

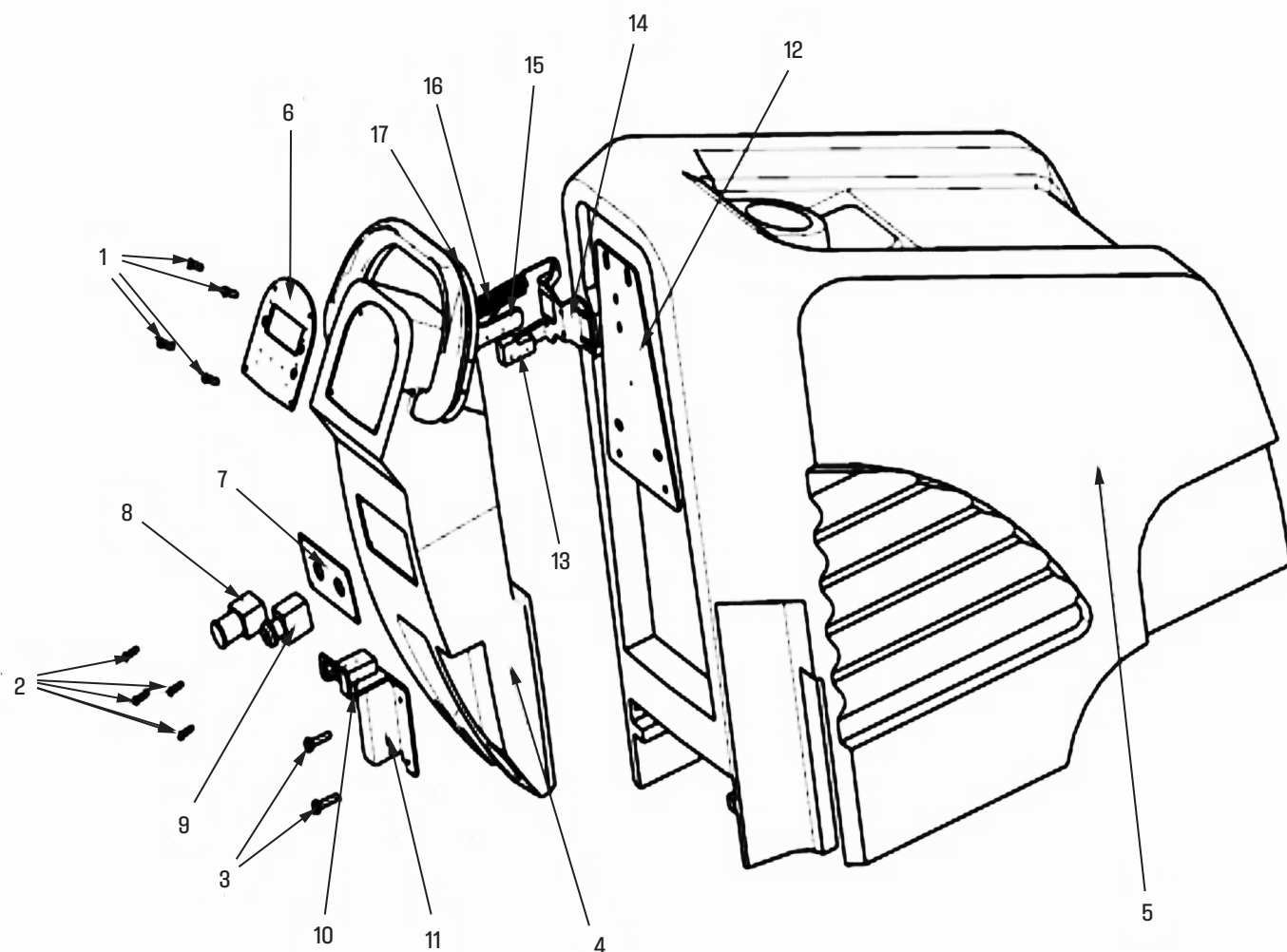
Provide your detail logistic information

Provide your name, company name, shipping address, phone number and purchase order number.



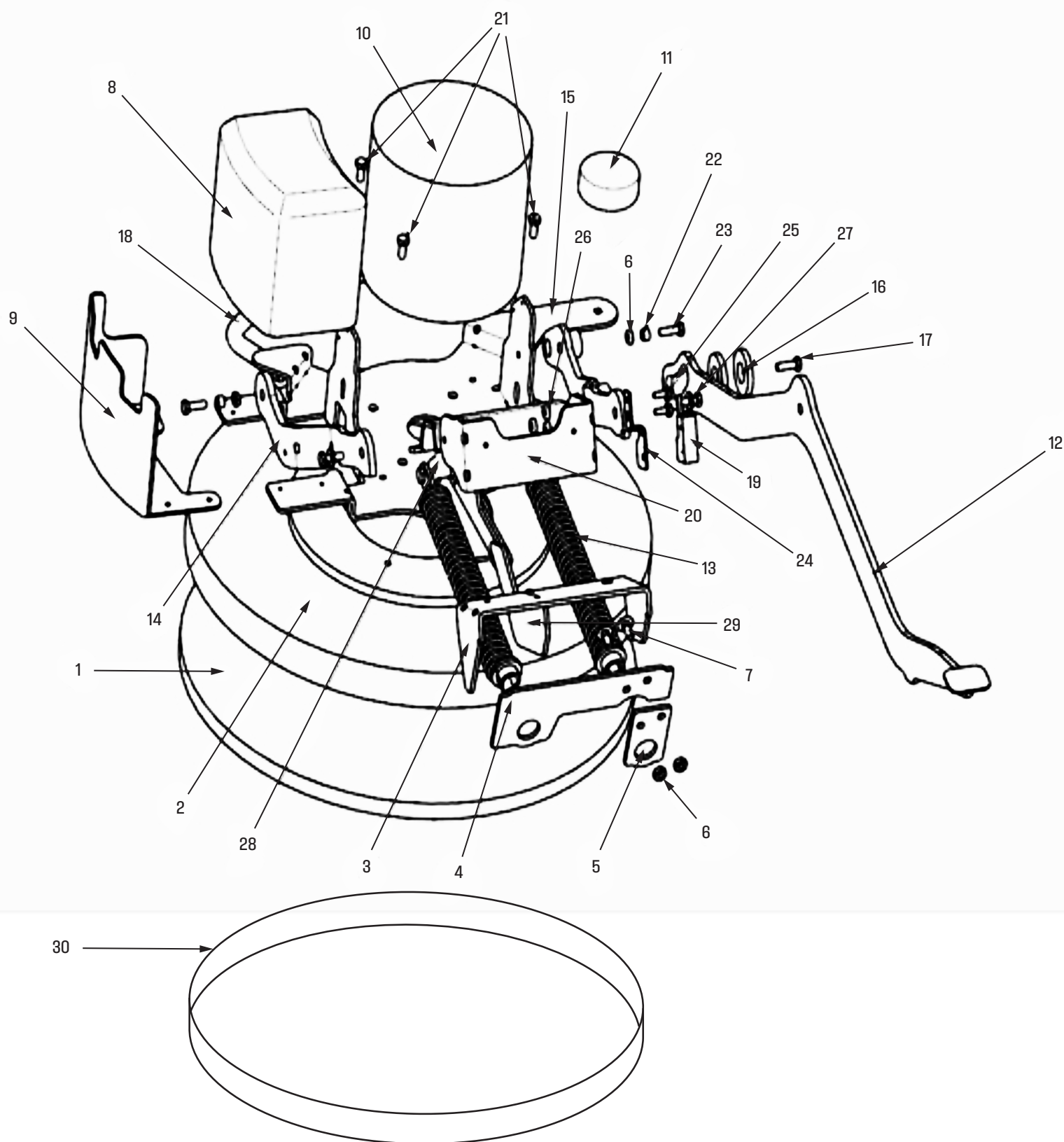
12605 Commerce Station Dr • Suite 700
Huntersville, NC 28078
704.827.9368

COVER GROUP



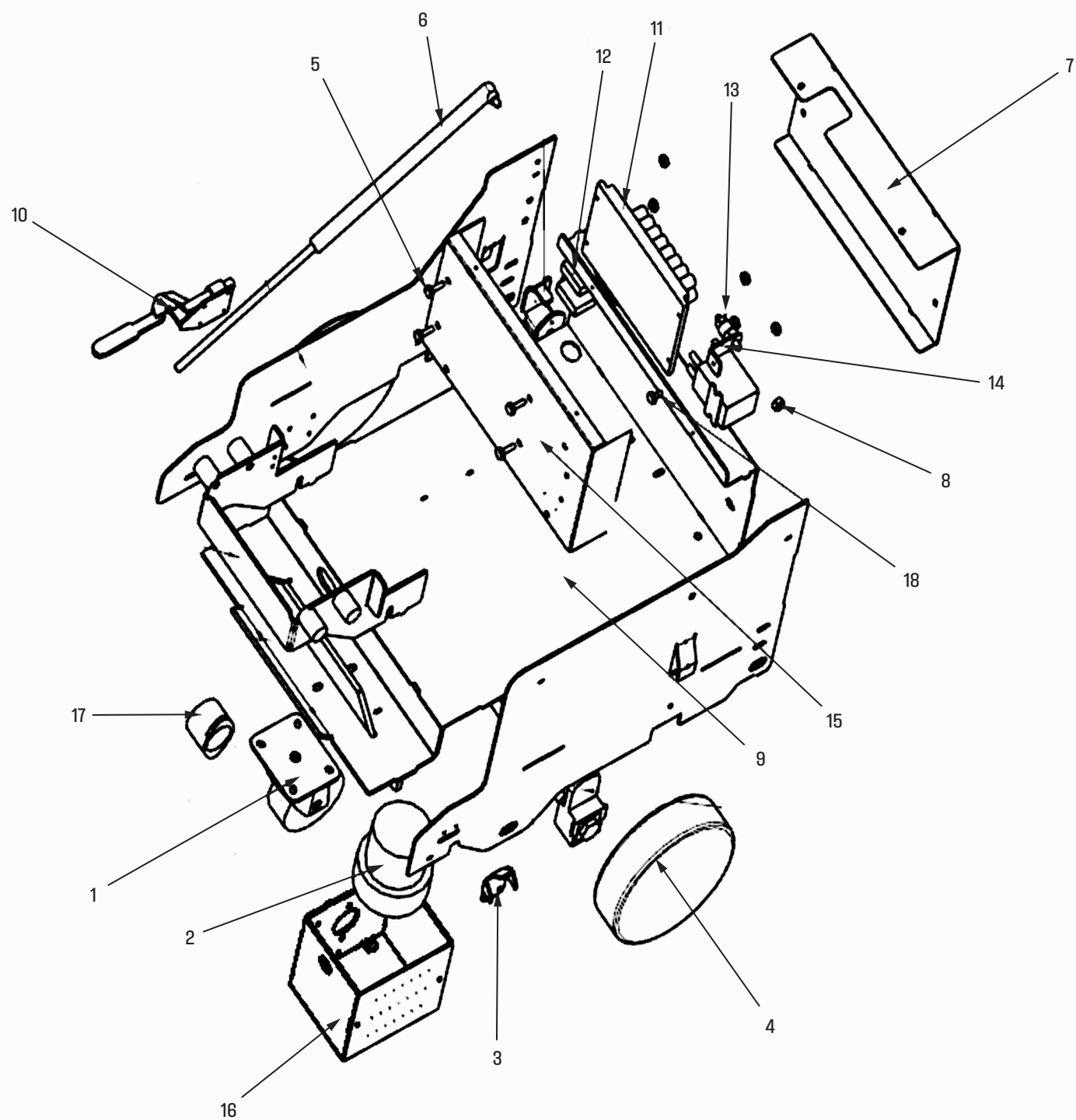
No	Part No.	Description	Qty
1	For Reference	M5X10 Round head screw	4
2	For Reference	M5X10 Round head screw	4
3	For Reference	M6X20 Hex screw	2
4	W12400	Handle	1
5	W12401	Cover	1
6	W12402	Operation panel	1
7	W12403	Plate for switch	1
8	W12404	Emergency Stop	1
9	W10817	Key Switch	1
10	W10858	Charger socket Housing, Small	1
11	W12251	Plate for Charging socket	1
12	W12408	Fix plate, Spring	1
13	W12409	Micro Switch	1
14	W12410	Spring Mount-01	1
15	W12411	Spring Mount-02	1
16	For Reference	Spring	1
17	W12412	Ball Switch	1

BRUSH GROUP



No	Part No.	Description	Qty
1	W12413	Pad	1
2	W12414	Shroud	1
3	W12415	Fixing plate for support Spring -03	1
4	W12416	Fixing plate for support Spring -01	1
5	W12417	Fixing plate for support Spring -02	1
6	For Reference	Lock nut-M8	2
7	For Reference	Carriage bolt M8X20	10
8	W12418	Cover, dust bag	1
9	W12419	Fixing plate, dust bag cover	1
10	W12420	Brush motor	1
11	W12421	Bumper Wheel	1
12	W12422	Pedal, lift head	1
13	W12423	Support springs	2
14	W12424	Connecting plate	2
15	W12425	Fixing plate, brush shroud	1
16	For Reference	Nylon washer	2
17	For Reference	Hex screw M8X25	2
18	W12426	Bumper Bar	1
19	W12409	Micro switch	1
20	W12428	Fixing plate for support spring-04	1
21	For Reference	Hex Screw M8X20	4
22	W12429	Lining	2
23	For Reference	Hex Screw M8X30	2
24	W12430	Fixing plate, micro switch	1
25	For Reference	Hex screw, M6X20	2
26	For Reference	Lock nut-M6	2
27	For Reference	M8 washer	6
28	W12431	Fixing plate for support spring-05	1
29	W12432	Fixing plate for support spring -06	1
30	W12455	JXi Skirt	1

FRAME GROUP



FRAME GROUP

No	Part No.	Description	Qty
1	W10833	Caster wheel	1
2	W12434	Suction motor	1
3	W12435	Stopper, brush lift	1
4	W10855	Wheel, 8"	2
5	For Reference	Hex screw M6X25	4
6	W12438	Hydraulic pole	1
7	W12439	Cove, controller box	1
8	For Reference	Block nut-M8	2
9	W12440	Main plate,frame	1
10	W12443	Brake, Wheel Lock	1
11	W12444	Controller	1
12	W12446	Heat proector	2
13	W12447	Insulation column	1
14	W12448	Fixing plate, insulation column	1
15	W12449	Fixing plate, controller	1
16	W12407	Cover, suction motor	1
17	W12436	Connector, Vaccum Nozzle	1
18	For Reference	Hex Screw M6X20	1



12605 Commerce Station Dr • Suite 700
Huntersville, NC 28078
704.827.9368



onyxsolutions.com